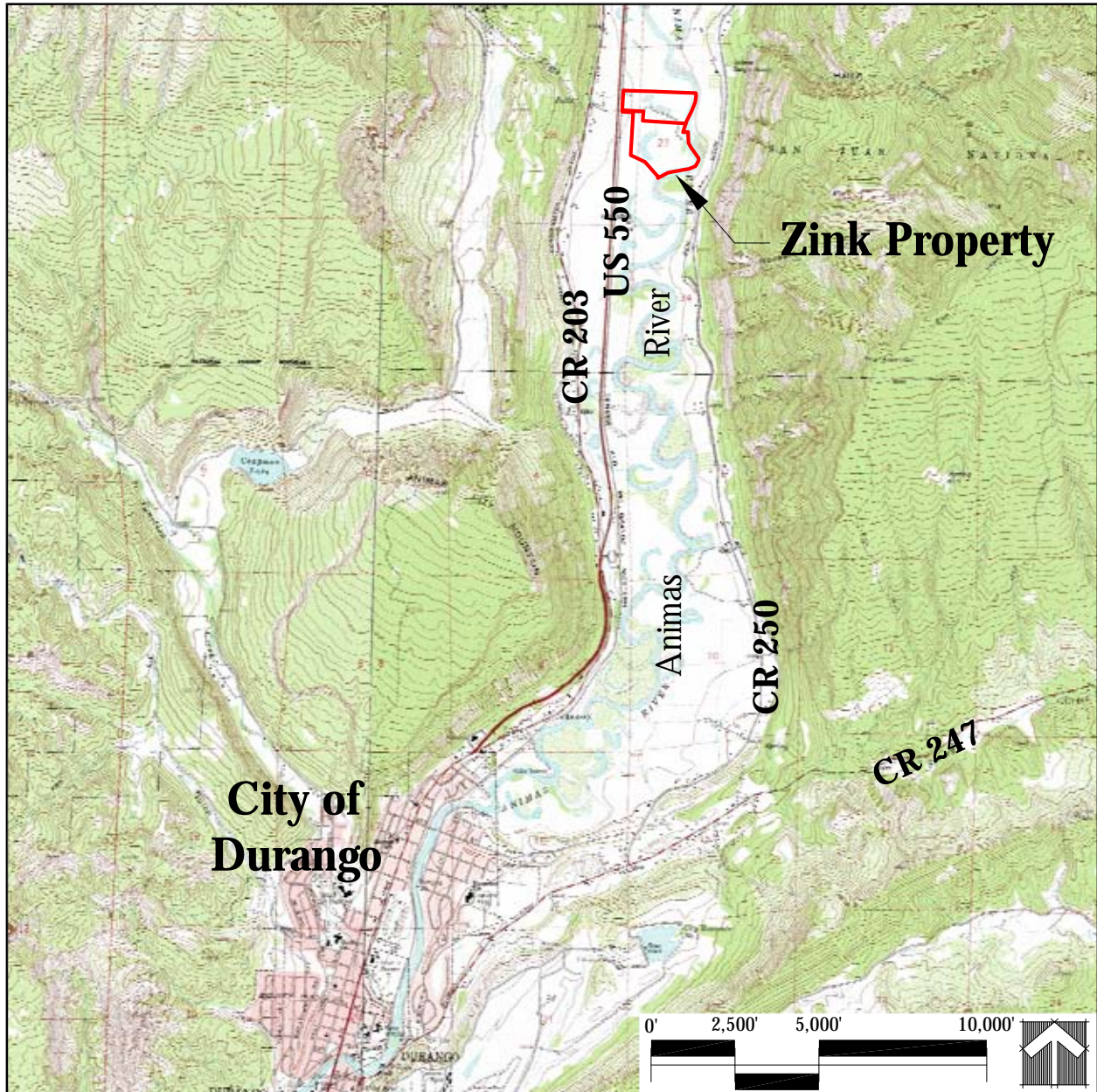
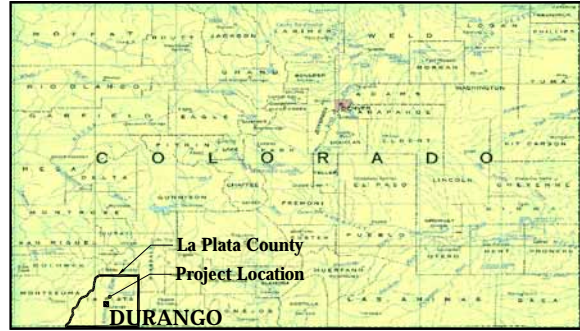


PROJECT LOCATION:

Section 27, Township 35 North, Range 9 West.
New Mexico Principal Meridian,
La Plata County, Colorado.

CENTROID LOCATION:

Latitude: 37° 21' 28"
Longitude: -107° 50' 48"



PROJECT LOCATION

ZINK WETLAND
BANK PROSPECTUS

FIGURE 1

Source: Hermosa
Colo. 7.5' USGS Quadrangles